

Peri-urban agriculture and climate - thinking about resilient development pathways

19èmes Journées de Recherches en Sciences Sociale

P. Brémond M. Modjeska C. Aubry G. Colinet A.
Domeneghetti N. Graveline F. Grelot L. Hossard M. Kuper
J. Morris D. Nortes Martinez C. Perrin G. Pulliat A. Richard
Ferroudji L. Rolland

G-eau, INRAE & Université de Liège & Università di Bologna & UMR INNOVATION &
Cranfield University

2025-12-16

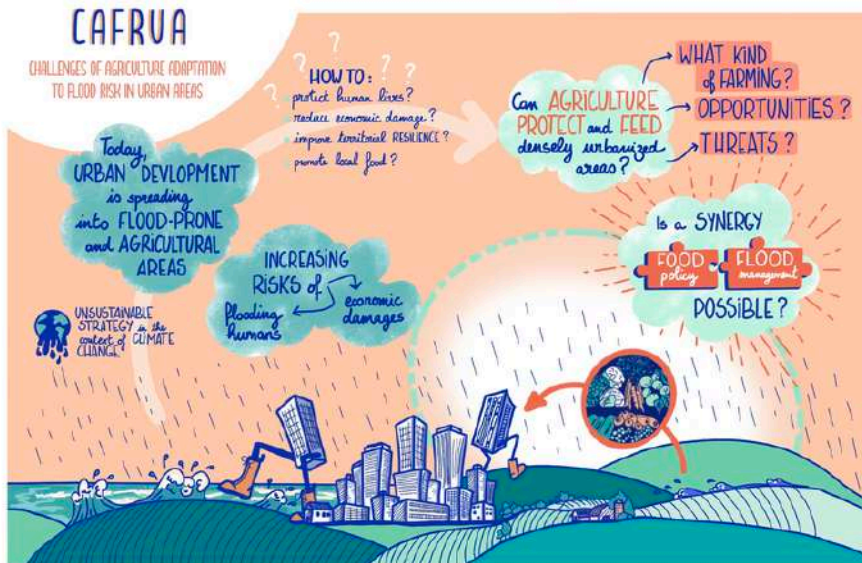
Table of content

CAFRUA project

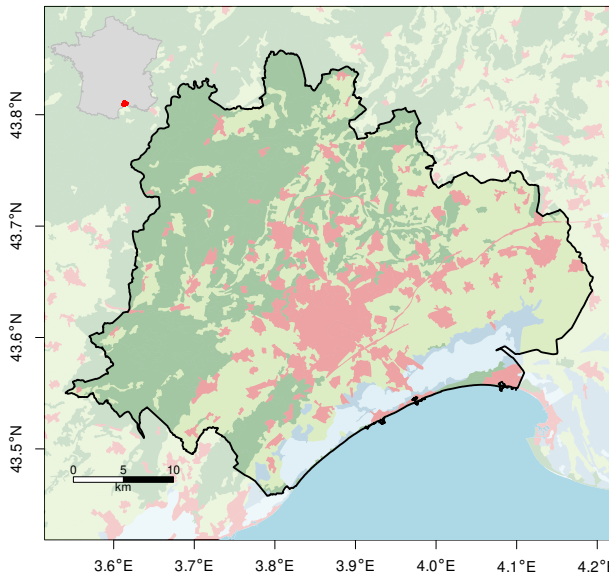
Sharing scientific knowledge

Common pathway and determinants identified

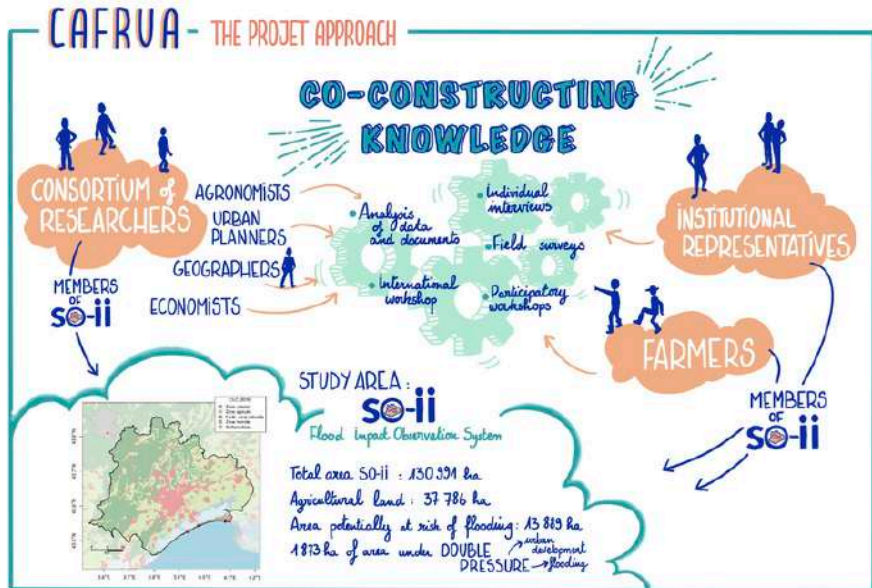
CAFRUA project - Objectives



CAFRUA - Method & case study



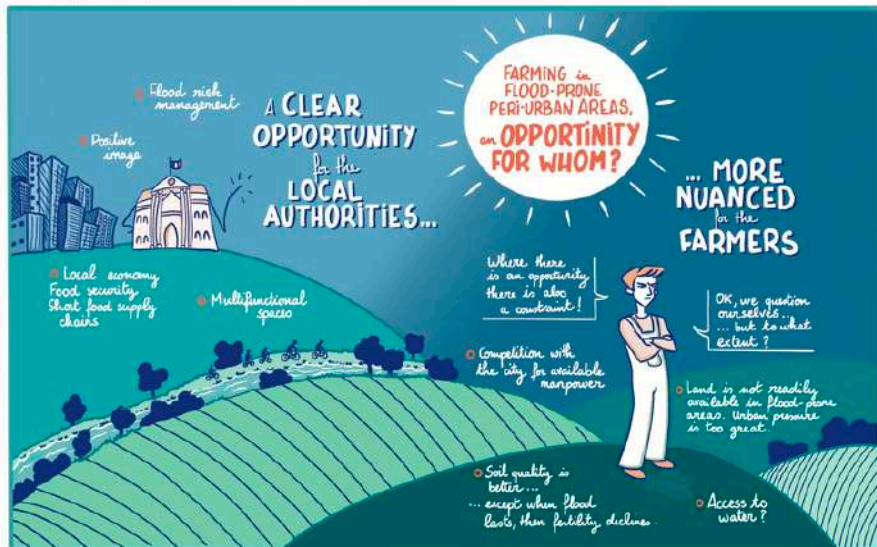
CAFRUA - Method & case study



CAFRUA results - Opportunities

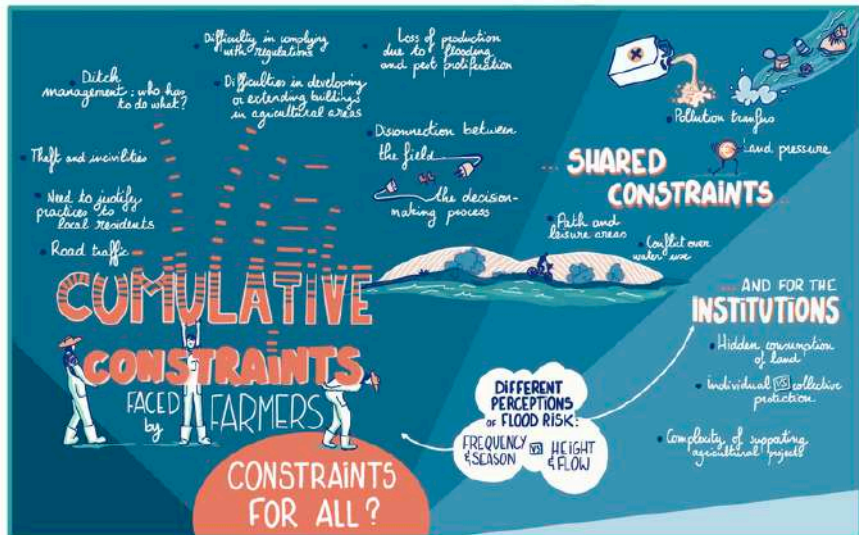
CAFRUA

WORKSHOP RESULTS - INSTITUTIONS & FARMERS - SHARED DIAGNOSIS



CAFRUA results - Constraints

CAFRUA WORKSHOP RESULTS - INSTITUTIONS & FARMERS - SHARED DIAGNOSIS



1. Method to characterize exposure of agriculture to flood risk and urban pressure
 - ▶ using existing databases
 - ▶ replicable on several case studies
2. Better understanding of the double exposure to flood risk and urban pressure / Identifying patterns
 - ▶ type, area and proportion of crops in the exposed area
 - ▶ exposure of each type of crop on the perimeter
 - ▶ farm exposure (if possible)
3. Implications for the urban planning and management policies

CAFRUA - Characterising peri-urban agriculture



Results - European metropolises - Double pressure

- ▶ using heterogeneous data (LPIS, flood zone)
- ▶ homogeneous (buffer CLC)

	Montpellier	Modena	Parma	Cambridge	Liège
Total (ha)	62 634.5	155 840	167 792.4	95 123.4	79 591.1
Agriculture (%)	21.7	60	58.7	86.5	44.8
Flood area (%)	32.6	66	41.6	11.1	9.2
Urban pressure (%)	31.4	23	19.5	27.1	39.3
Agri & Flood (%)	7.5	42	25.6	9.6	1.6
Double pressure (%)	3.7	11	7.5	3.2	1.4

- ▶ Variability of agricultural areas under flood pressure
 - ▶ between 1 and 42%
- ▶ Agricultural areas under double pressure
 - ▶ between 1 and 11%

CAFRUA - Key points to remember

- ▶ Peri-urban agriculture persists even around densely populated areas
- ▶ Declining and abandoned land is appearing
- ▶ Farmers mainly suffer from constraints related to their location in peri-urban and flood-prone areas
- ▶ Opportunities for farmers are not being fully exploited
- ▶ Opportunities for urban areas can be significant (depending on the type of agriculture)

Table of content

CAFRUA project

Sharing scientific knowledge

Common pathway and determinants identified

International workshop

Peri-urban agriculture and climate: thinking about resilient development pathways - May 16th -17th 2024 Montpellier



Sharing scientific knowledge

12 CASE STUDIES in 8 COUNTRIES

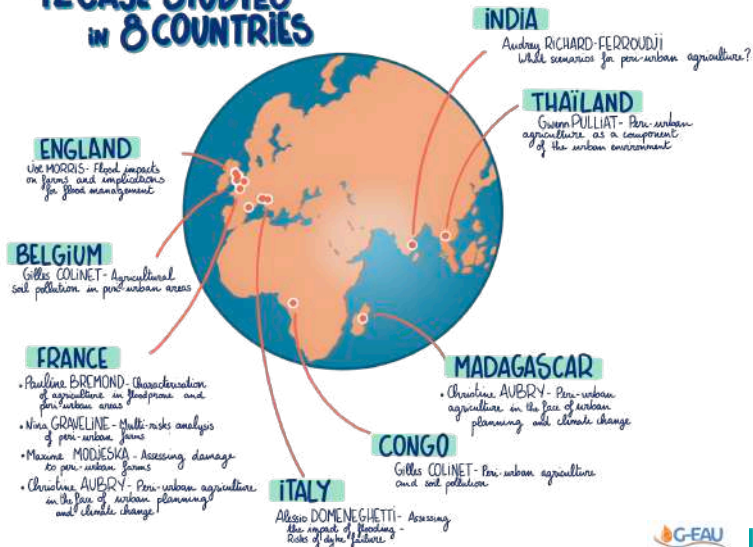


Table of content

CAFRUA project

Sharing scientific knowledge

Common pathway and determinants identified

Can we identify a common pathway?

AN INTERNATIONAL OVERVIEW

CAFRUA

SEMINAR on 16-17 MAY 2024 in MONTPELLIER

12 CASE STUDIES in 8 COUNTRIES

INDIA

Audrey RICHARD-FERROUDJI
While scenarios for peri-urban agriculture?

THAILAND

Gaëlle PULLIAT - Peri-urban
agriculture as a component
of the urban environment

ENGLAND

Ute MORRIS - Flood impacts
on farms and implications
for flood management

BELGIUM

Gilles COLINET - Agricultural
soil pollution in peri-urban areas

FRANCE

- Pauline BREMOND - Urbanisation
of agriculture in peri-urban and
peri-urban areas
- Nina GRAVILLON - Multi-risks analysis
of peri-urban farms
- Mélanie MODJESKA - Assessing damage
to peri-urban farms
- Christine AUBRY - Peri-urban agriculture
in the face of urban planning
and climate change

MADAGASCAR

- Christine AUBRY - Peri-urban
agriculture in the face of urban
planning and climate change

CONGO

Gilles COLINET - Peri-urban agriculture
and soil pollution

ITALY

Alisson DOMENEGHETTI - Assessing
the impact of flooding -
role of agri-futures

THE SAME DEVELOPMENT TRAJECTORY

DISPLAY of
the POLITICAL WILL
to MAINTAIN/DEVELOP
agriculture in flood-prone areas

REAL
OPPORTUNITIES
for LOCAL
AUTHORITIES

VERSUS

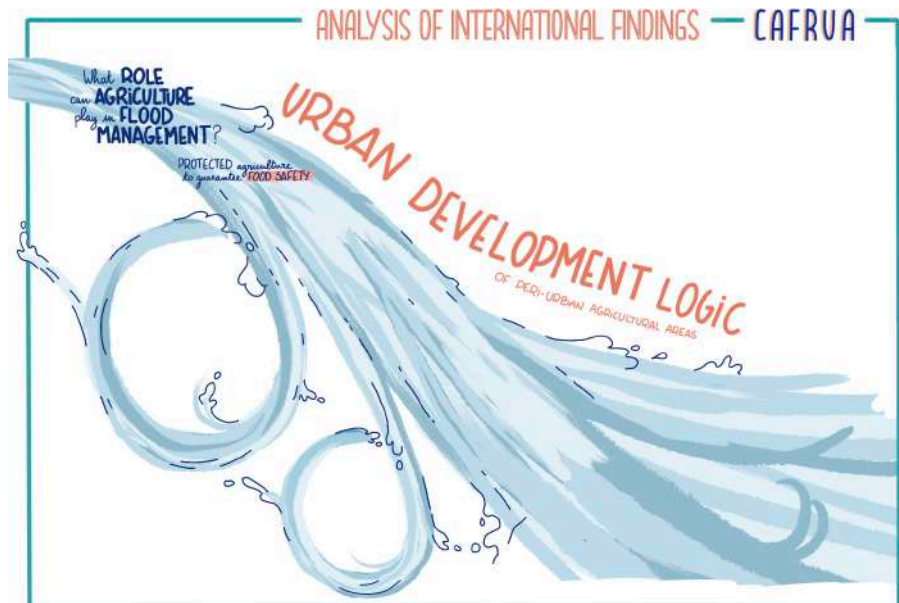
the REALITY
on the GROUND:
increased urbanisation
risks of flooding
in flood-prone agricultural
areas

MULTIPLE
CONSTRAINTS
for FARMERS

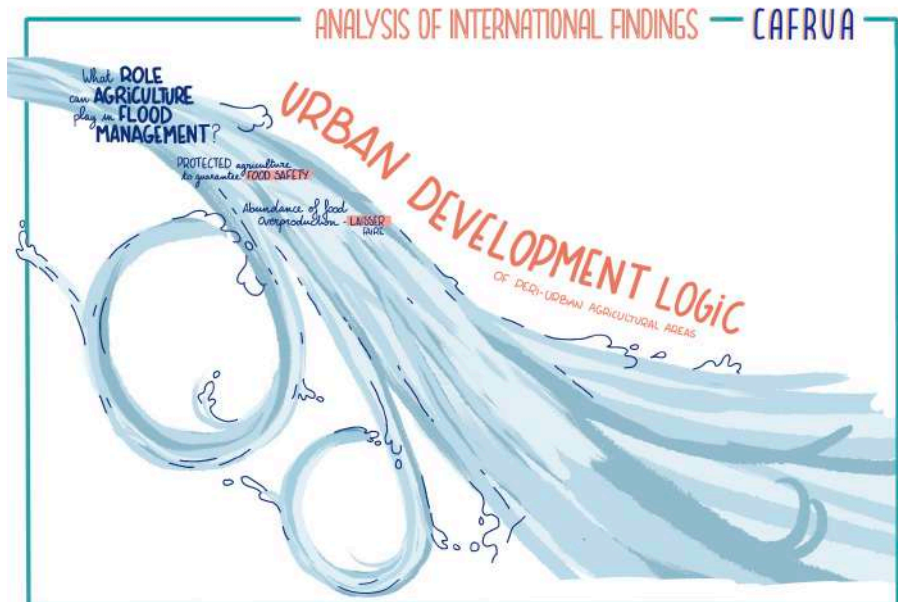
What are the common determinants?



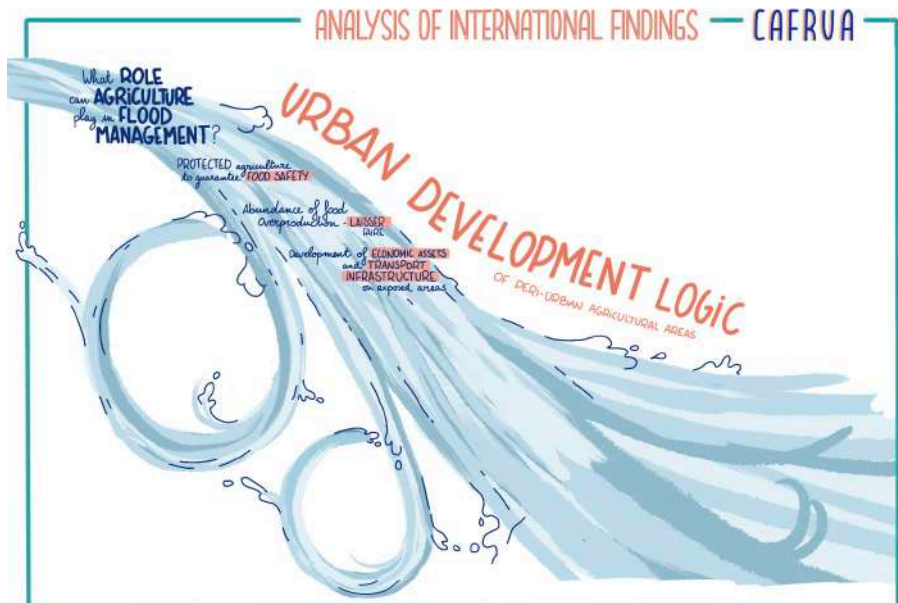
What are the common determinants?



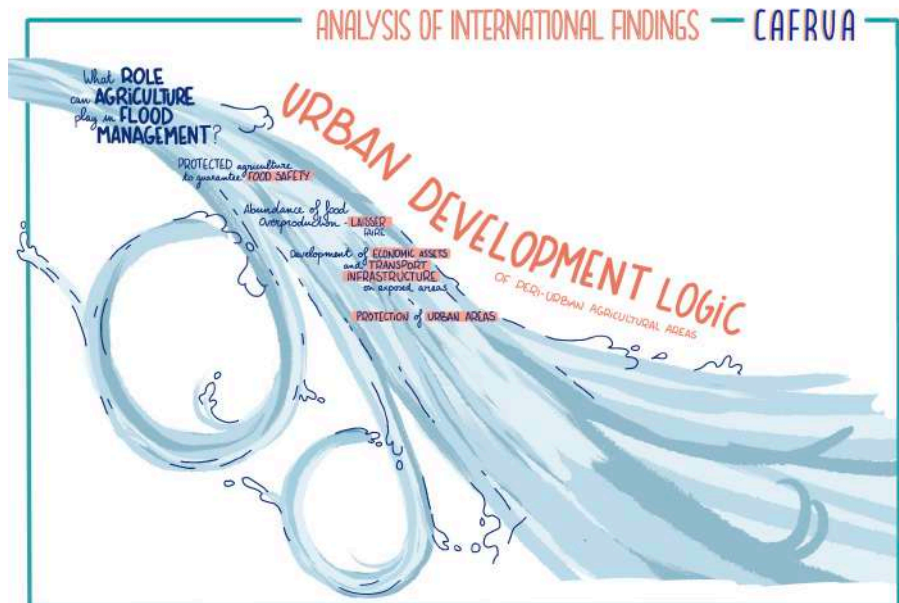
What are the common determinants?



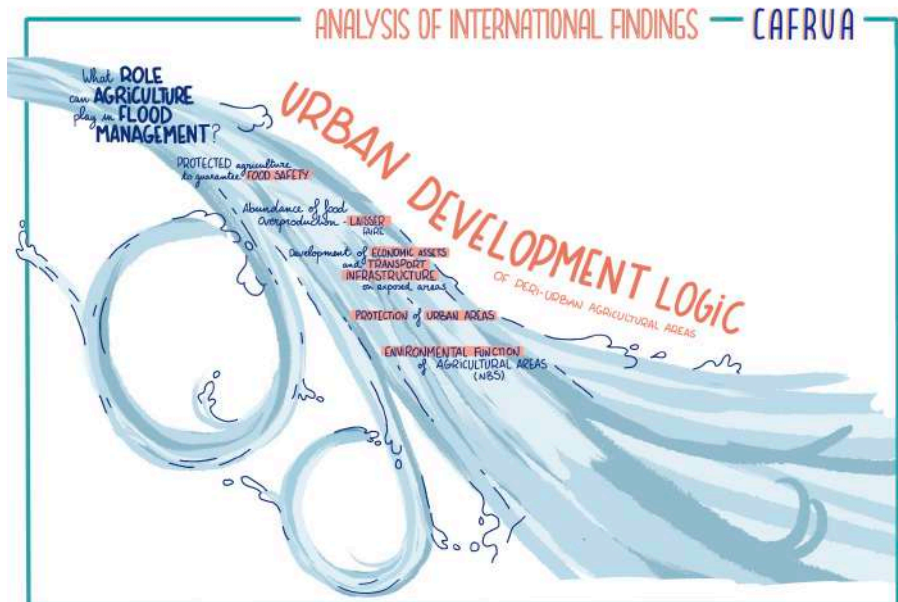
What are the common determinants?



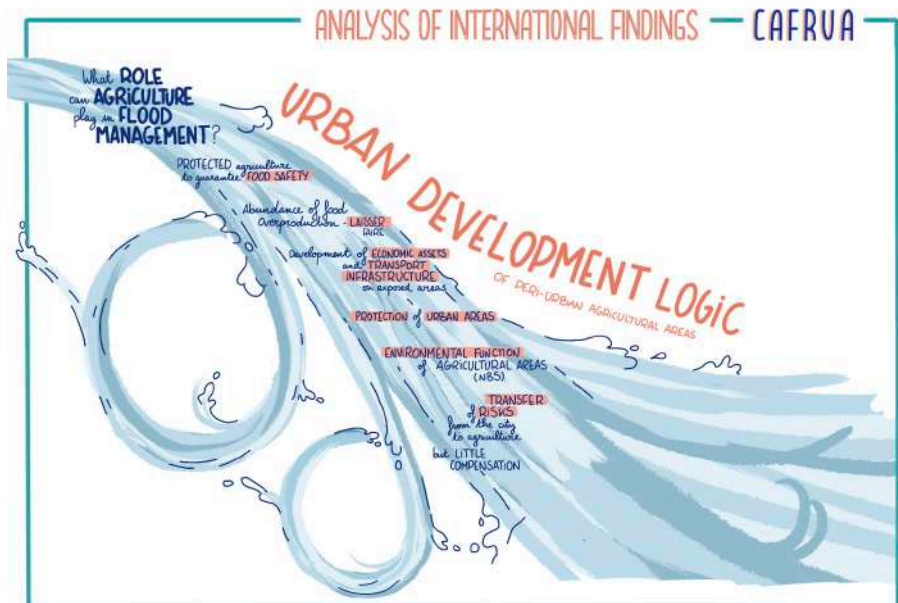
What are the common determinants?



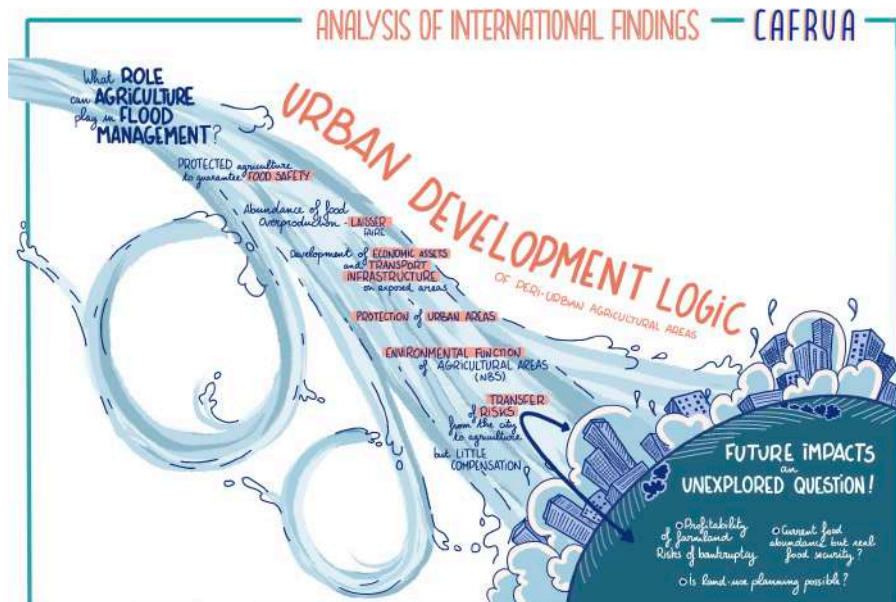
What are the common determinants?



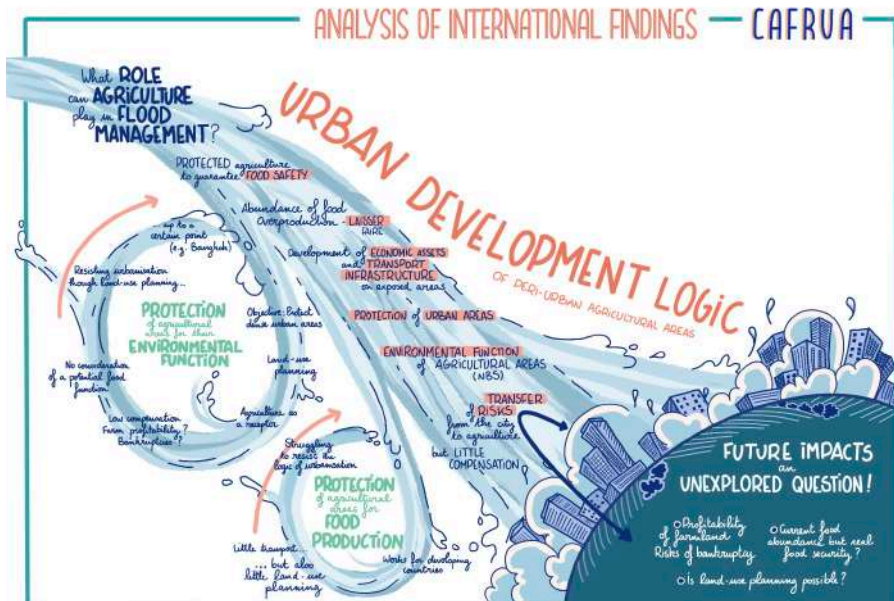
What are the common determinants?



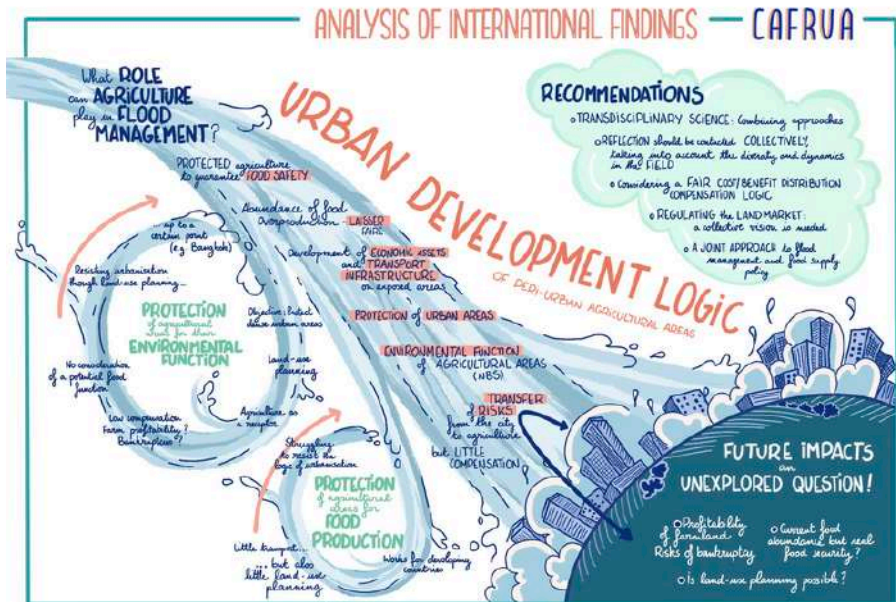
What are the common determinants?



What are the common determinants?



What are the common determinants?



Credits and acknowledgements

This work was supported by Agropolis Foundation, Labex AGRO 2011-LABX-002 as part of the CAFRUA project n°2101-027

The graphic boards were created by Claire Hernandez